



D.E. Society's

## BRIJLAL JINDAL COLLEGE OF PHYSIOTHERAPY

Fergusson College Campus, Pune - 411 004 •Phone: (020) 67656471, 67656467

•Fax: (91) (020) 67656494, 67656120 • E-mail: office.physiotherapy@despune.org

•Web-site: www.desphysiotherapycollege.com, [www.despune.org](http://www.despune.org)

**Approved by Govt. of Maharashtra, Maharashtra State Council of OT/ PT, Indian Association of Physiotherapist & affiliated to Maharashtra University of Health Sciences, Nashik**

### 4.1.1 GEOTAGGED PHOTOS OF FACILITIES

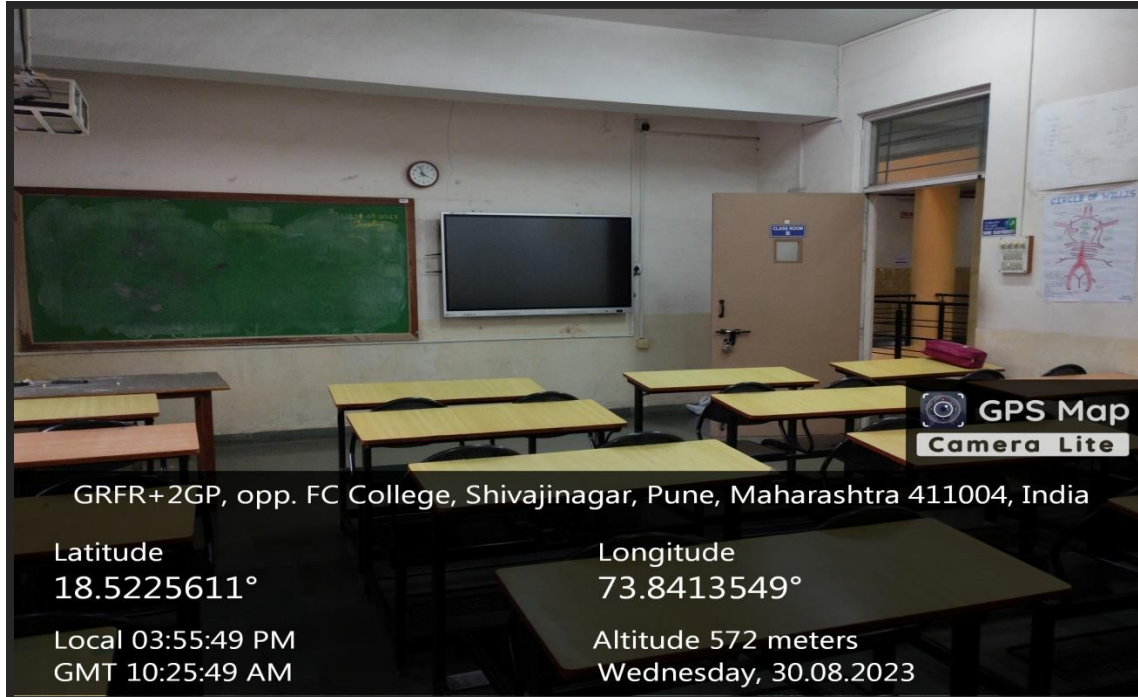
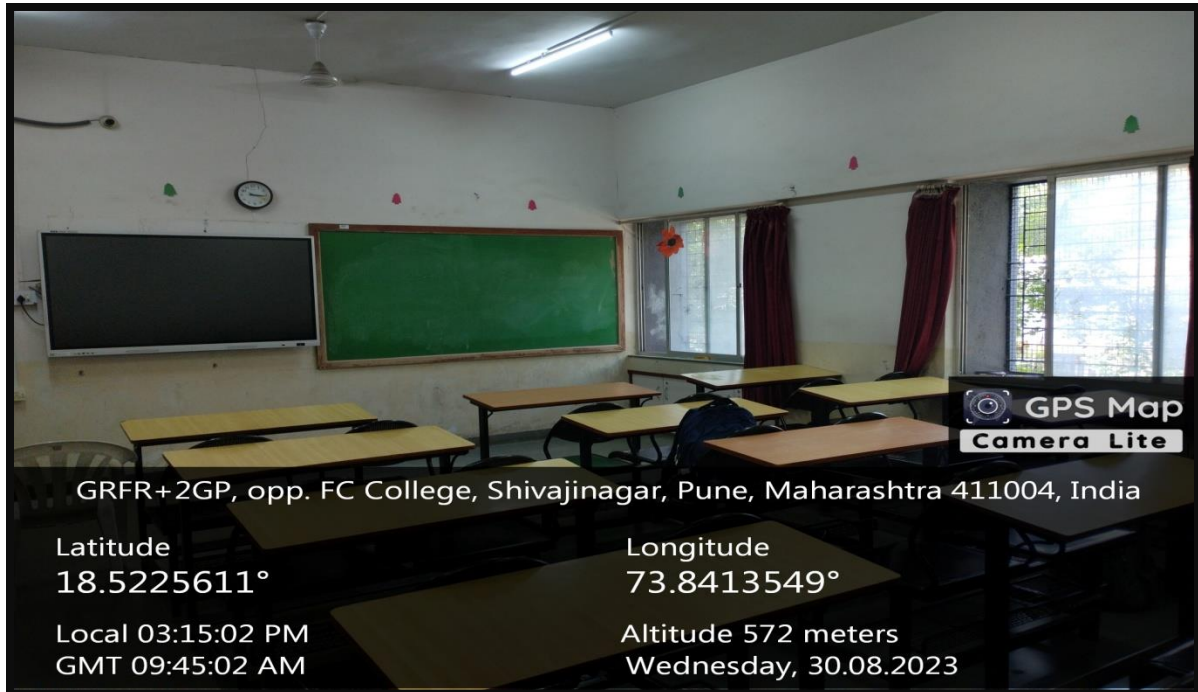


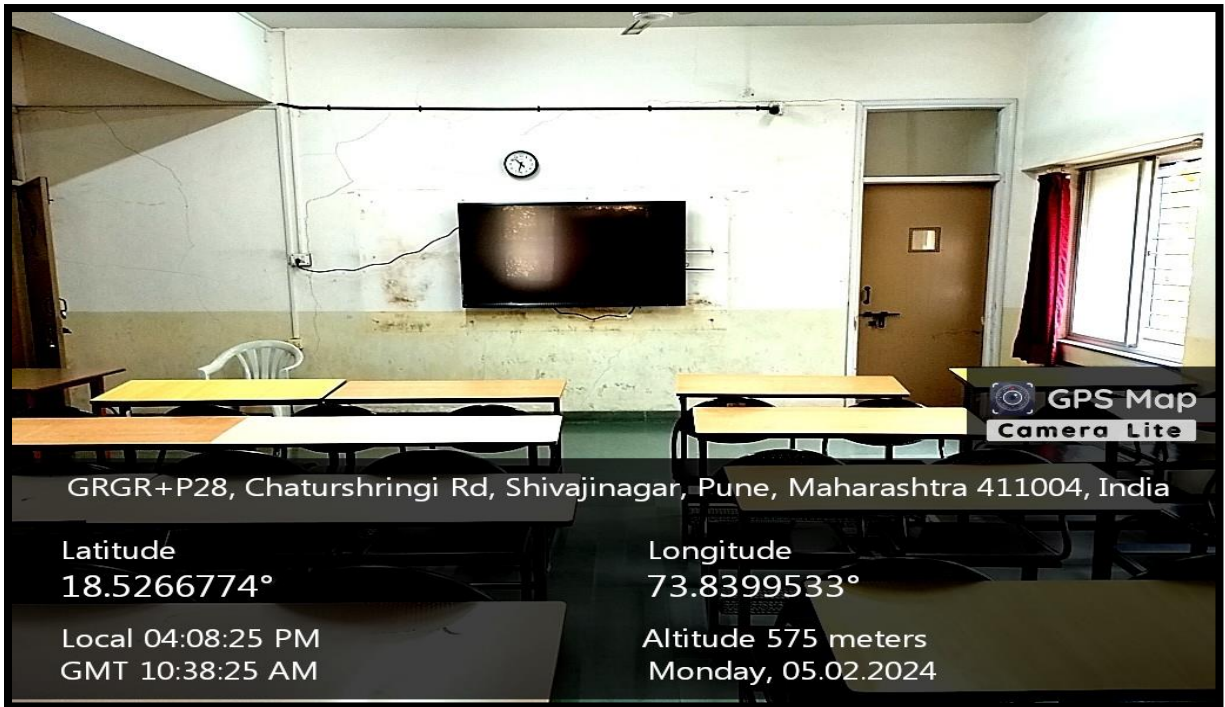
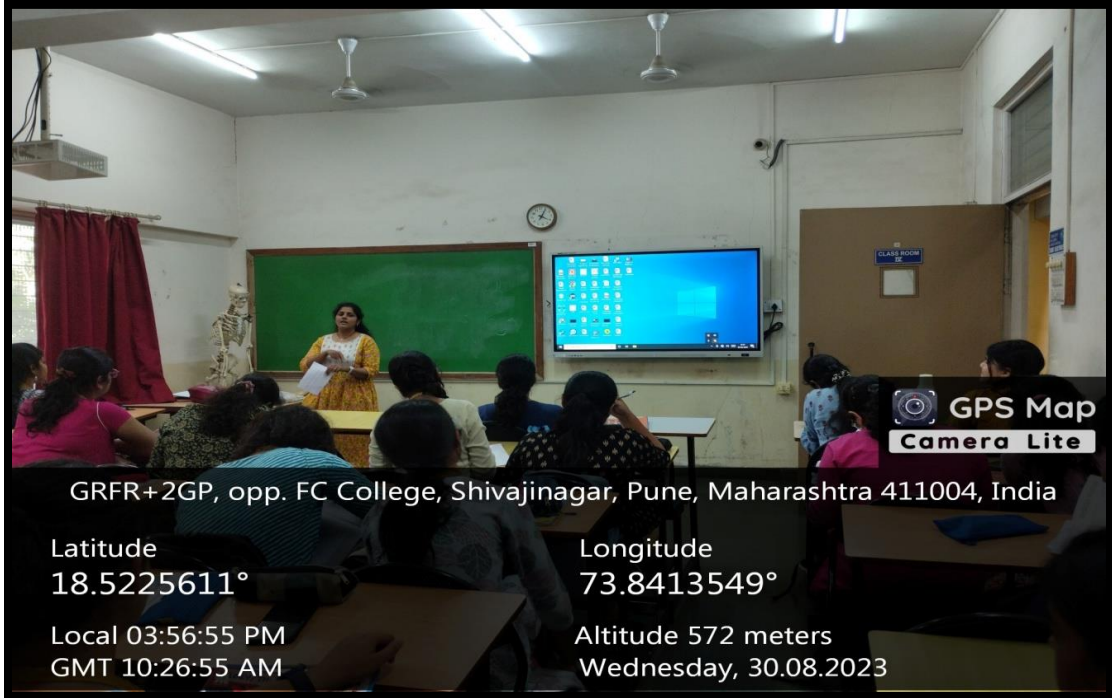
**College building**



**Main entrance**

## CLASSROOMS







GPS Map  
Camera Lite

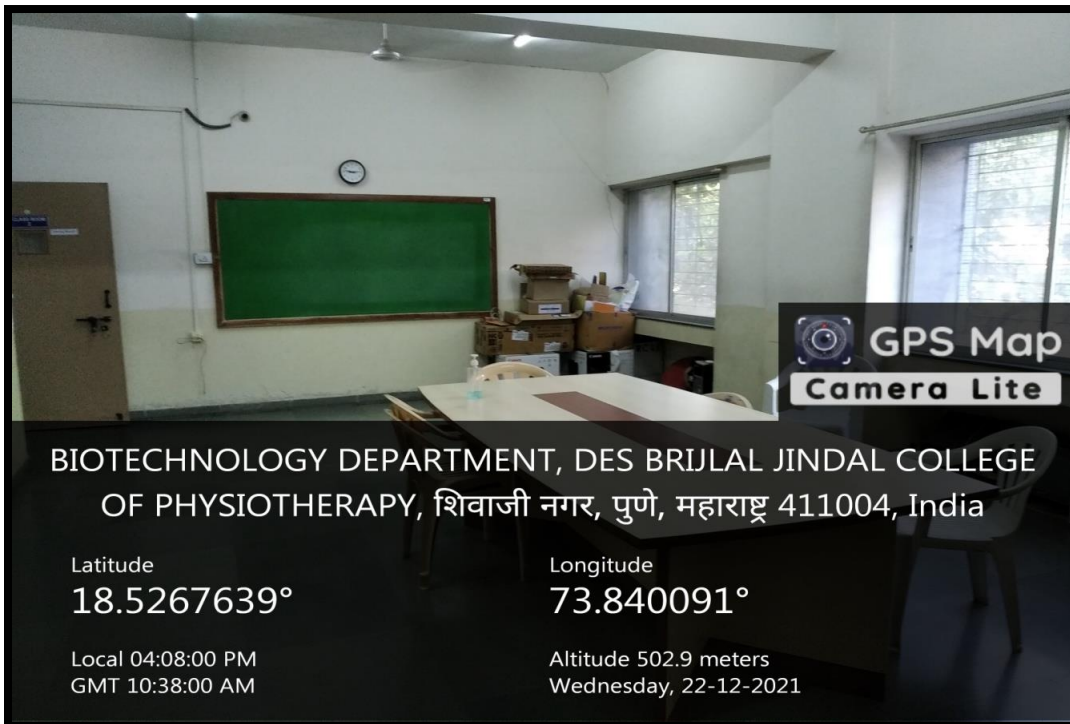
GRGR+P28, Chaturshringi Rd, Shivajinagar, Pune, Maharashtra 411004, India

Latitude  
18.5267749°

Longitude  
73.8399912°

Local 02:21:40 PM  
GMT 08:51:40 AM

Altitude 574 meters  
Monday, 05.02.2024



GPS Map  
Camera Lite

BIOTECHNOLOGY DEPARTMENT, DES BRIJLAL JINDAL COLLEGE  
OF PHYSIOTHERAPY, शिवाजी नगर, पुणे, महाराष्ट्र 411004, India

Latitude  
18.5267639°

Longitude  
73.840091°

Local 04:08:00 PM  
GMT 10:38:00 AM

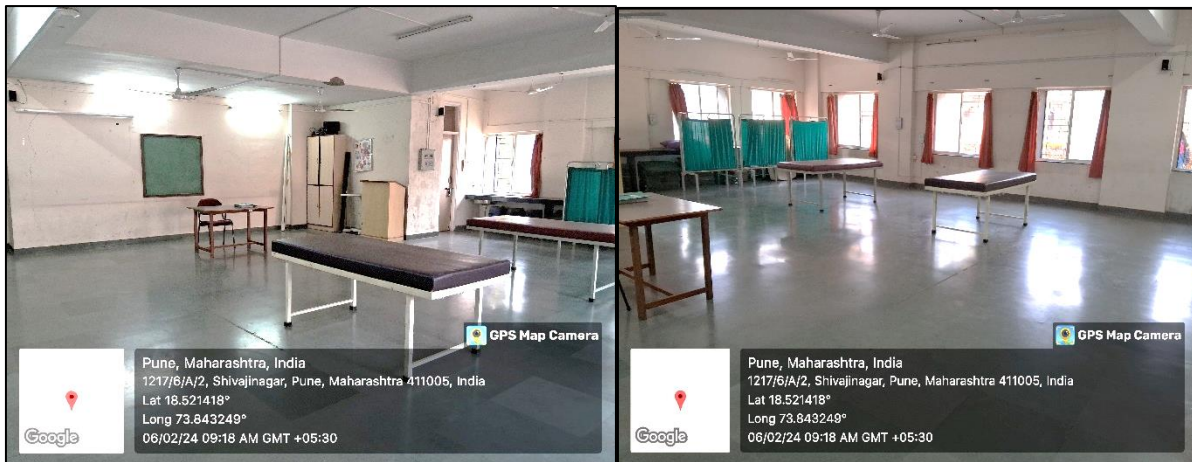
Altitude 502.9 meters  
Wednesday, 22-12-2021

# LABORATORIES

## ANATOMY LAB

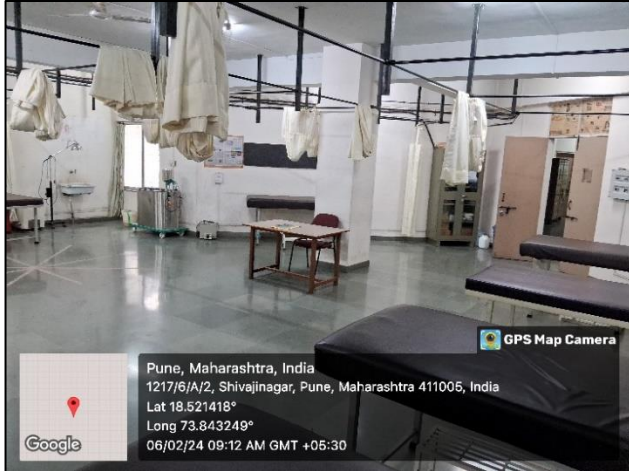


## PHYSIOLOGY LAB

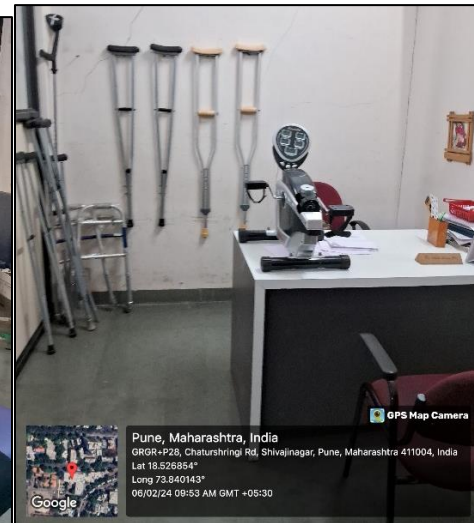
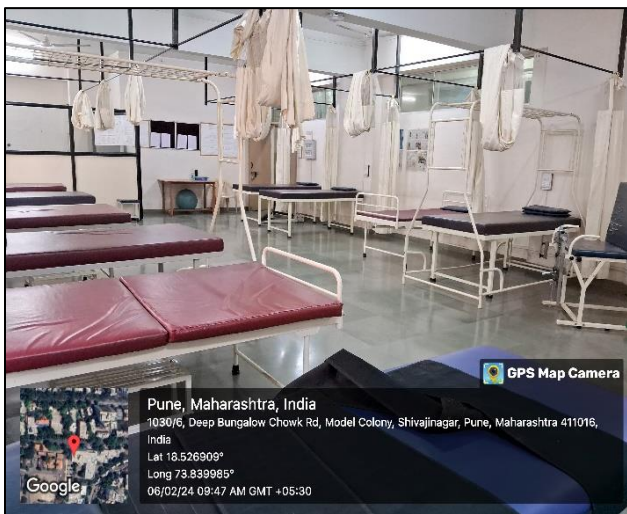
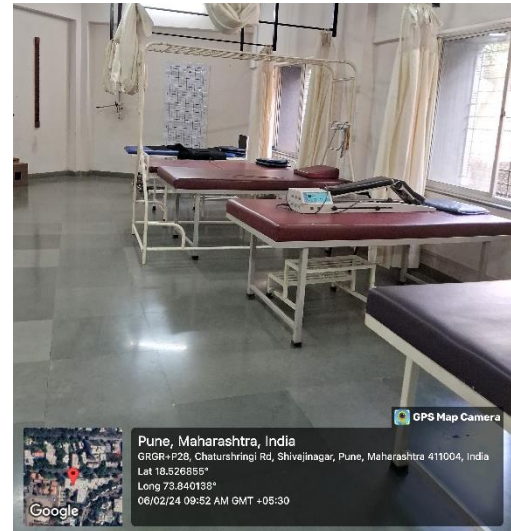
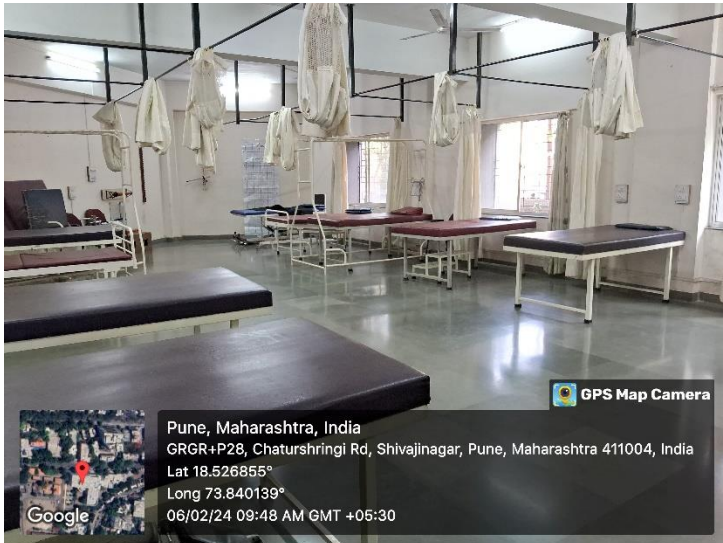


## ELECTROTHERAPY LAB

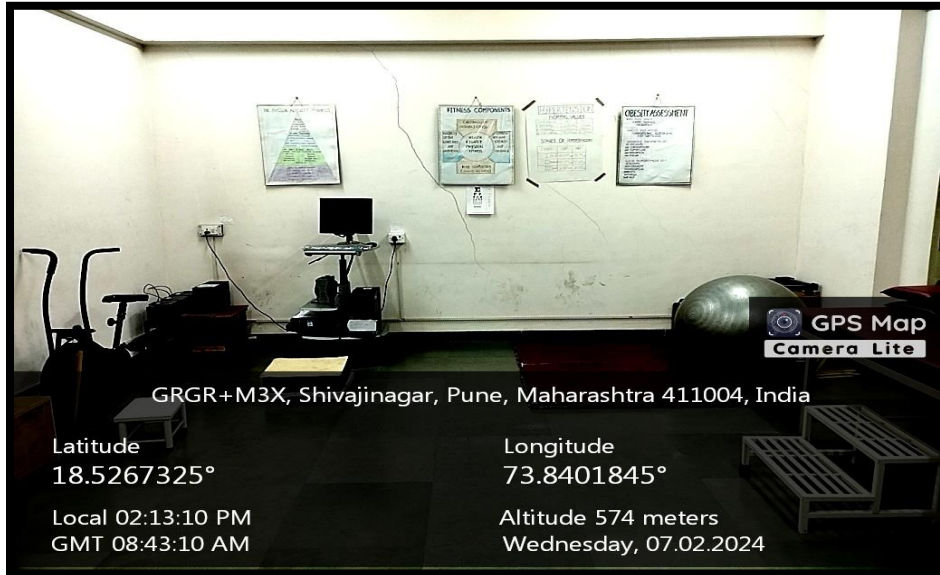




### KINESIOTHERAPY LAB



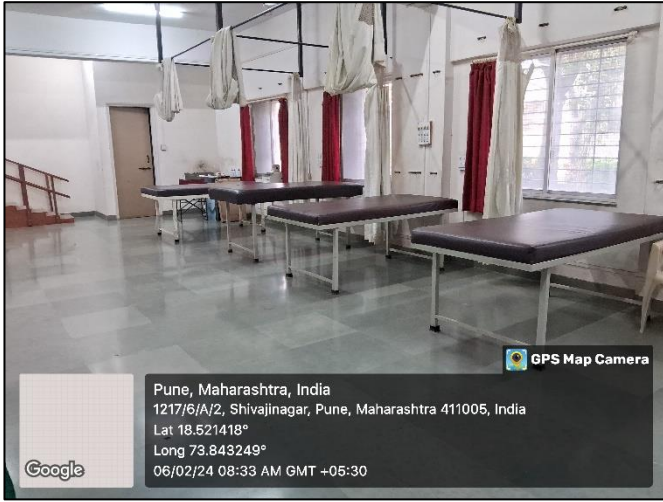
## COMMUNITY LAB



## CARDIO RESPIRATORY LAB



## MUSCULOSKELETAL LAB

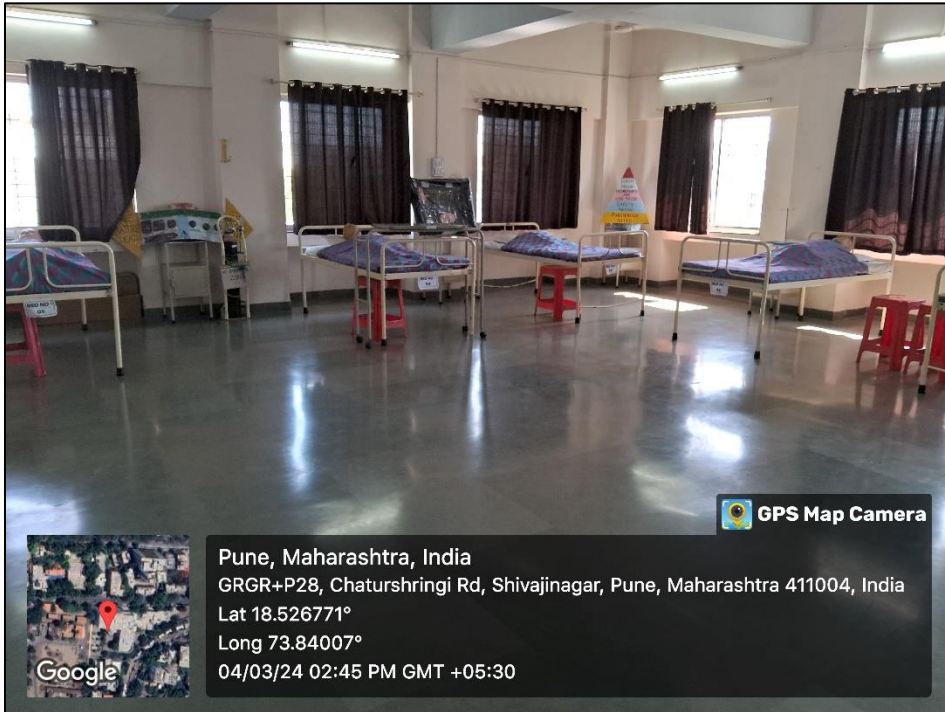


## NEUROPHYSIOTHERAPY LAB





## SHARED FACILITY FOR SIMULATION LAB



## OTHER ICT ENABLED AND TELECONFERENCING FACILITIES

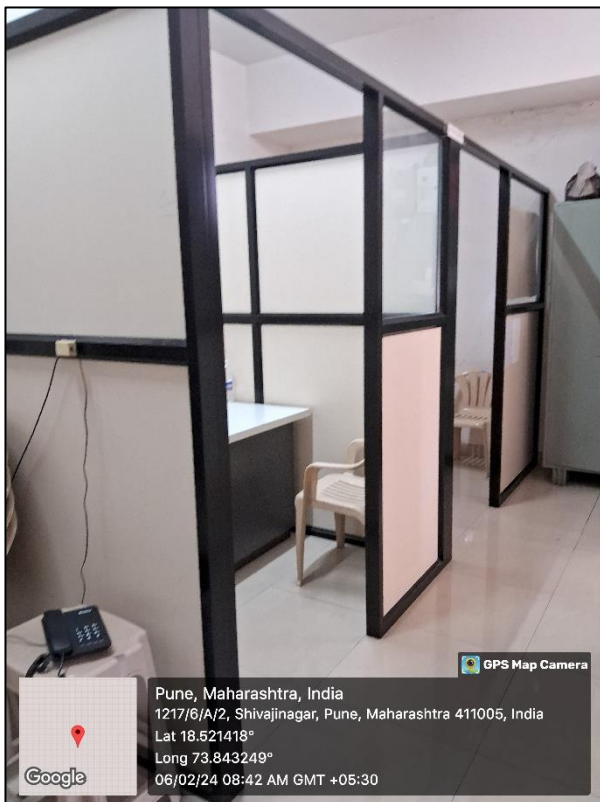
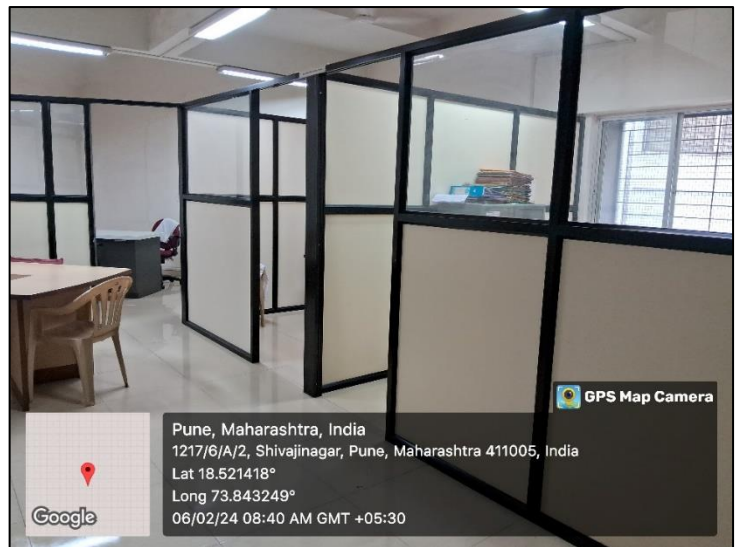
### PRINCIPAL'S OFFICE



### BOARD ROOM / IQAC ROOM



## CLINICAL DEPARTMENT AND STAFFROOMS



## KUNDANMAL FIRODIA AUDITORIUM



*Jany*

**PRINCIPAL**  
D. E. Society's Brijlal Jind  
College of Physiotherapy  
Pune