



D.E. Society's
BRIJLAL JINDAL COLLEGE OF PHYSIOTHERAPY

Fergusson College Campus, Pune - 411 004 • Phone: (020) 67656471, 67656467

• Fax: (91) (020) 67656494, 67656120 • E-mail: office.physiotherapy@despune.org

• Web-site: www.desphysiotherapycollege.com, www.despune.org

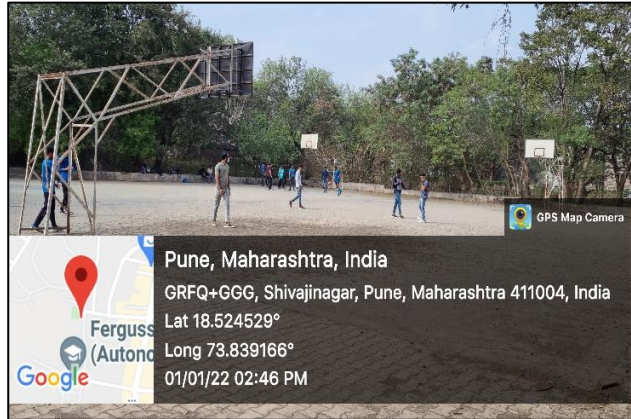
Approved by Govt. of Maharashtra, Maharashtra State Council of OT/ PT, Indian

Association of Physiotherapist & affiliated to Maharashtra University of Health Sciences, Nashik

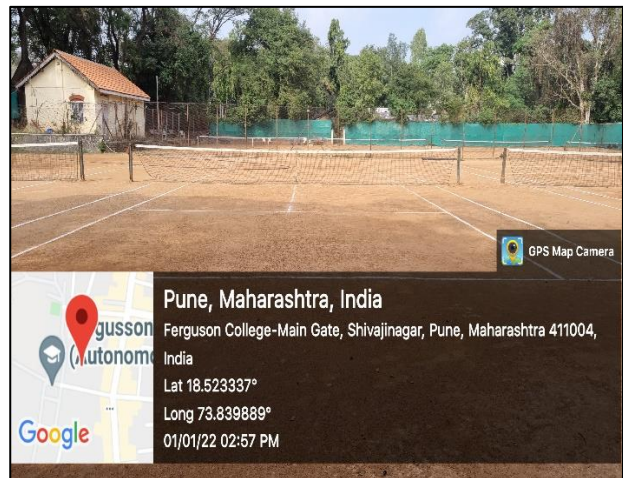
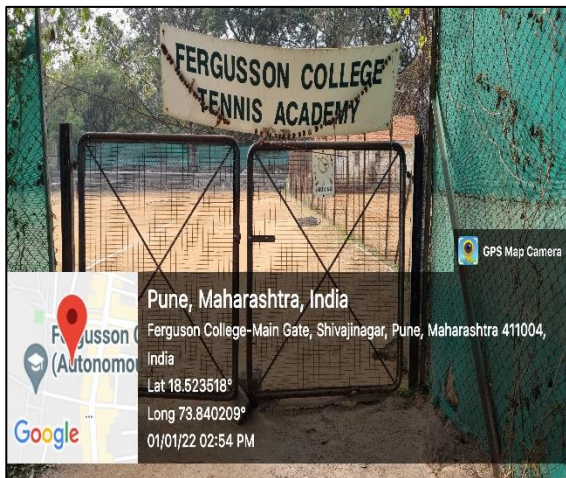
4.1.2 Geotagged photographs

SPORTS FACILITIES

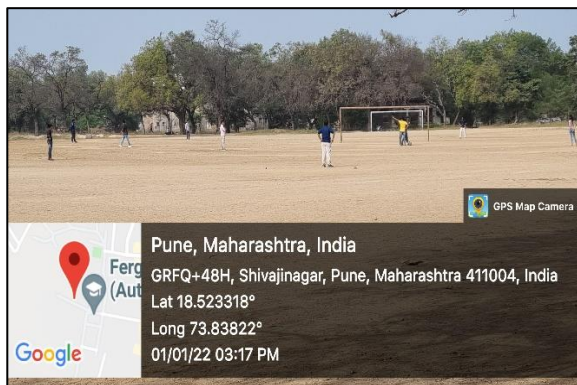
BASKETBALL COURT



TENNIS ACADEMY



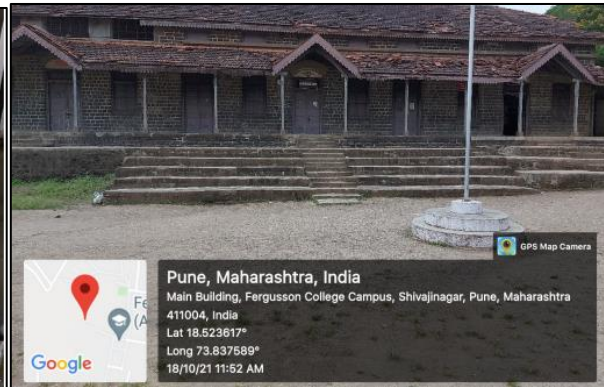
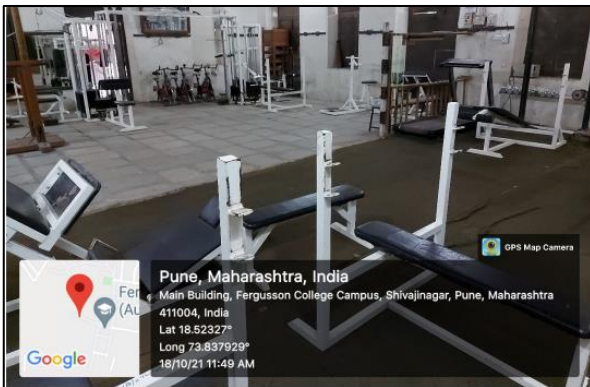
GROUND FOR ATHLETIC EVENTS, CRICKET, KHO KHO, KABADDI, FOOTBALL, THROWBALL, DODGEBALL,



BADMINTON COURT



GYMKHANA.



COLLEGE PREMISES



INDOOR SPORTS
conducted during
inauguration of
intercollege sports
events.

**FACILITIES FOR
CULTURAL ACTIVITIES, YOGA**

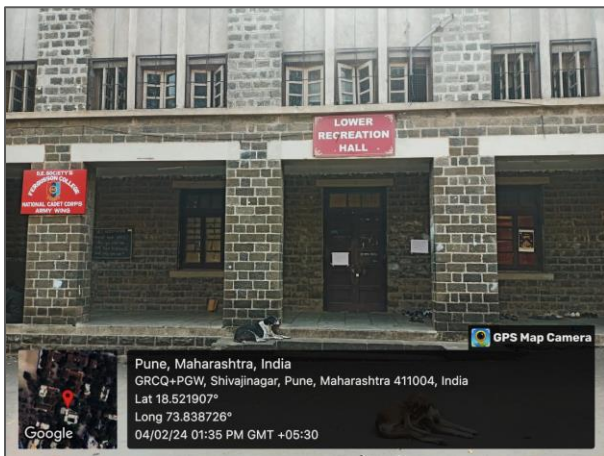
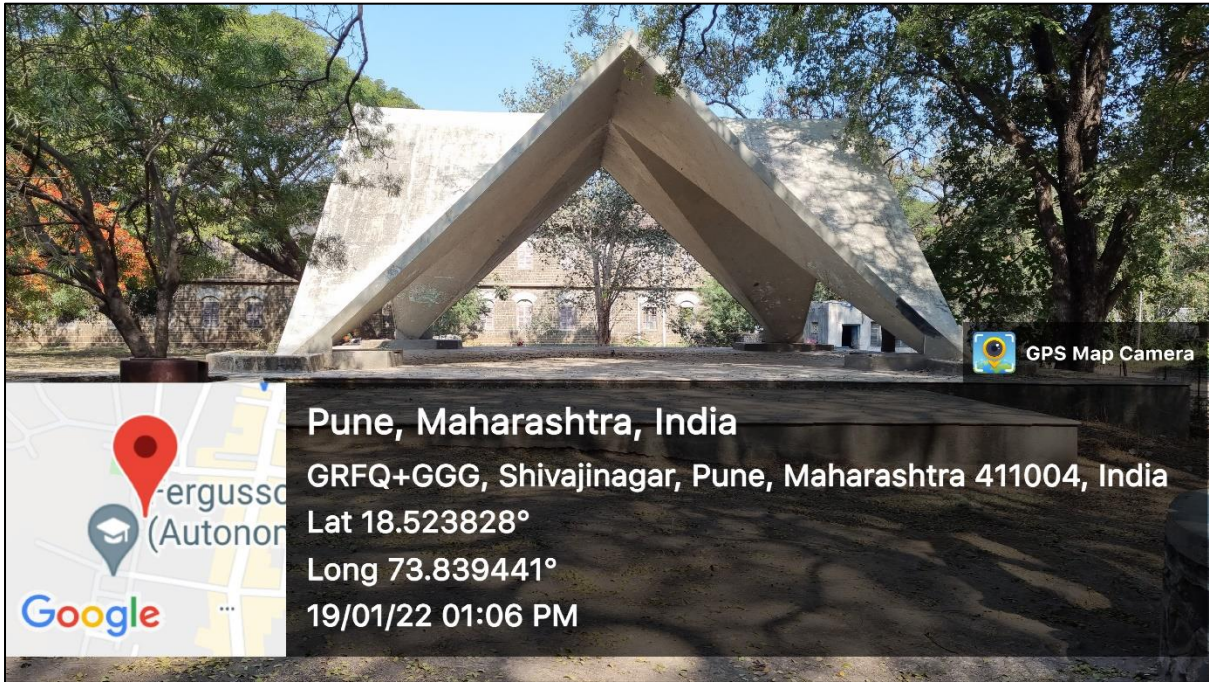
AMPHITHEATRE



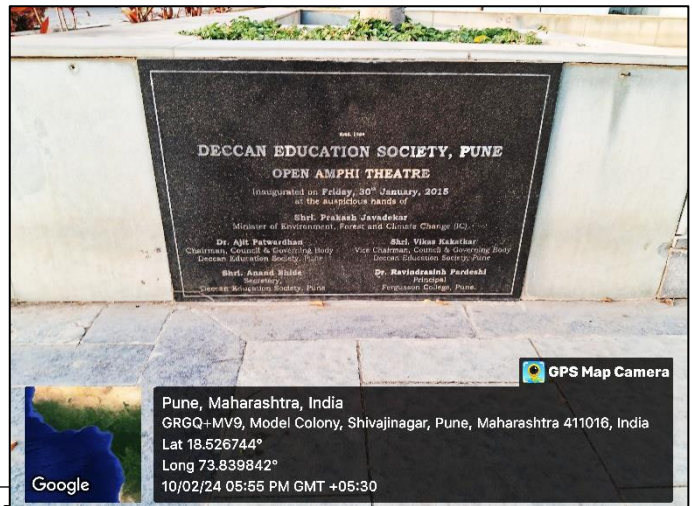
SHRI NAVALMAL FIRODIA AUDITORIUM.



KIMAYA



LOWER RECREATION



COLLEGE PREMISES

AMPHITHEATRE



Garba session for students

Saraswati Pujan



Aeromodelling show



Jany

PRINCIPAL
D. E. Society's Brijlal Jind
College of Physiotherapy
Pune