



DECCAN EDUCATION SOCIETY, PUNE

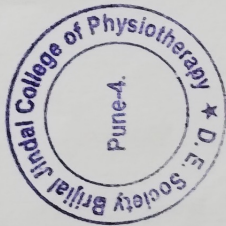
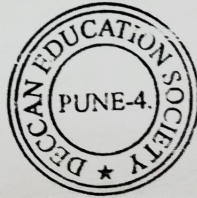
Fergusson College Campus, Pune - 411 004
Phone : (91) (020) 67876000, 67876090
E- mail : secretary@despune.org. Web Site : www.despune.org

Ref. No.: 3037-Admin/2021-22 Date: 02/02/2022

TO WHOM SO EVER IT MAY CONCERN

This is to certify that DES' Brijlal Jindal College of Physiotherapy, Pune is the constituent unit of Deccan Education Society, Pune. The staff and students at DES' Brijlal Jindal College of Physiotherapy, Pune are permitted to use DES' infrastructure such as Amphitheatre, Gymkhana and all the sports facilities including playgrounds, courts, open theatres, auditoriums etc. as and when required by following due procedure.

Shri. Dhananjay Kulkarni
Secretary,
Deccan Education Society, Pune.



PRINCIPAL
D. E. Society's Brijlal Jindal
College of Physiotherapy
Pune . 4

Estd. 24th October 1884, Registered under Act no. XXI of 1860 on 13th August 1885
and under the Bombay Public Trust Act of 1950 (No. F- 167) on 6th October 1954



D.E. Society's
BRIJLAL JINDAL COLLEGE OF PHYSIOTHERAPY

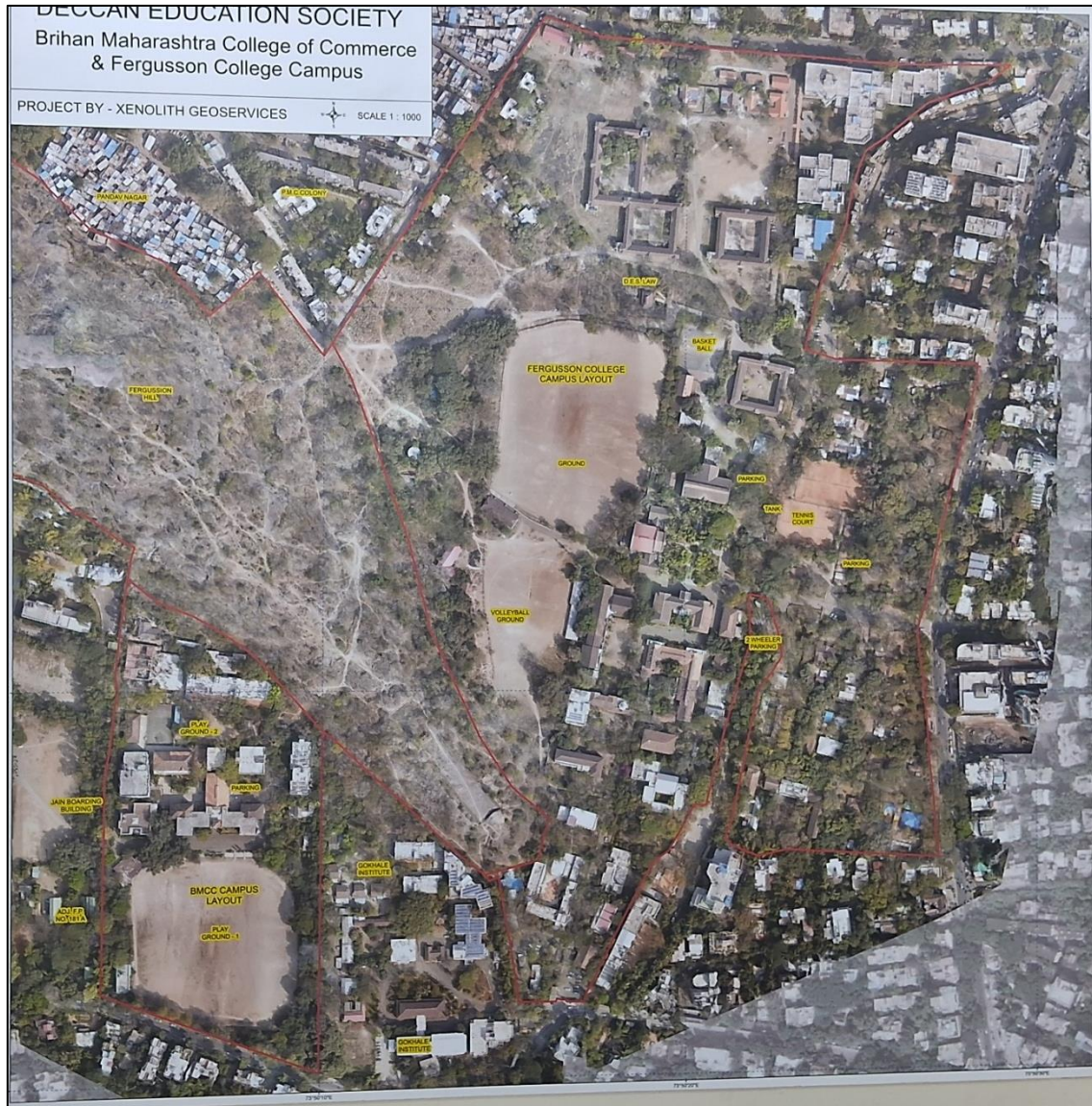
Fergusson College Campus, Pune - 411 004 • Phone: (020) 67656471, 67656467

• Fax: (91) (020) 67656494, 67656120 • E-mail: office.physiotherapy@despune.org

• Web-site: www.desphysiotherapycollege.com, www.despune.org

Approved by Govt. of Maharashtra, Maharashtra State Council of OT/ PT, Indian Association of Physiotherapist & affiliated to Maharashtra University of Health Sciences, Nashik

4.1.2 LAYOUT OF CAMPUS FACILITIES AND CAMPUS AMBIENCE



Jays

PRINCIPAL
D. E. Society's Brijlal Jind
College of Physiotherapy
Pune