



---

# Bronchiectasis

---



---

# CONTENTS

---

- ◆ Definition
- ◆ Aetiology
- ◆ Pathogenesis
- ◆ Clinical manifestations
- ◆ Diagnosis
- ◆ Treatment

# BRONCHIECTASIS

**Definition:** Abnormal and permanent dilation of bronchi.

Focal or diffuse distribution

Clinical consequences – chronic and recurrent infection and

Pooling of secretions in dilated airways.

**Classification:**

1. Cylindrical (fusiform)
2. Saccular
3. Varicose



Dr Shreya Dhake (PT)

Associate Professor

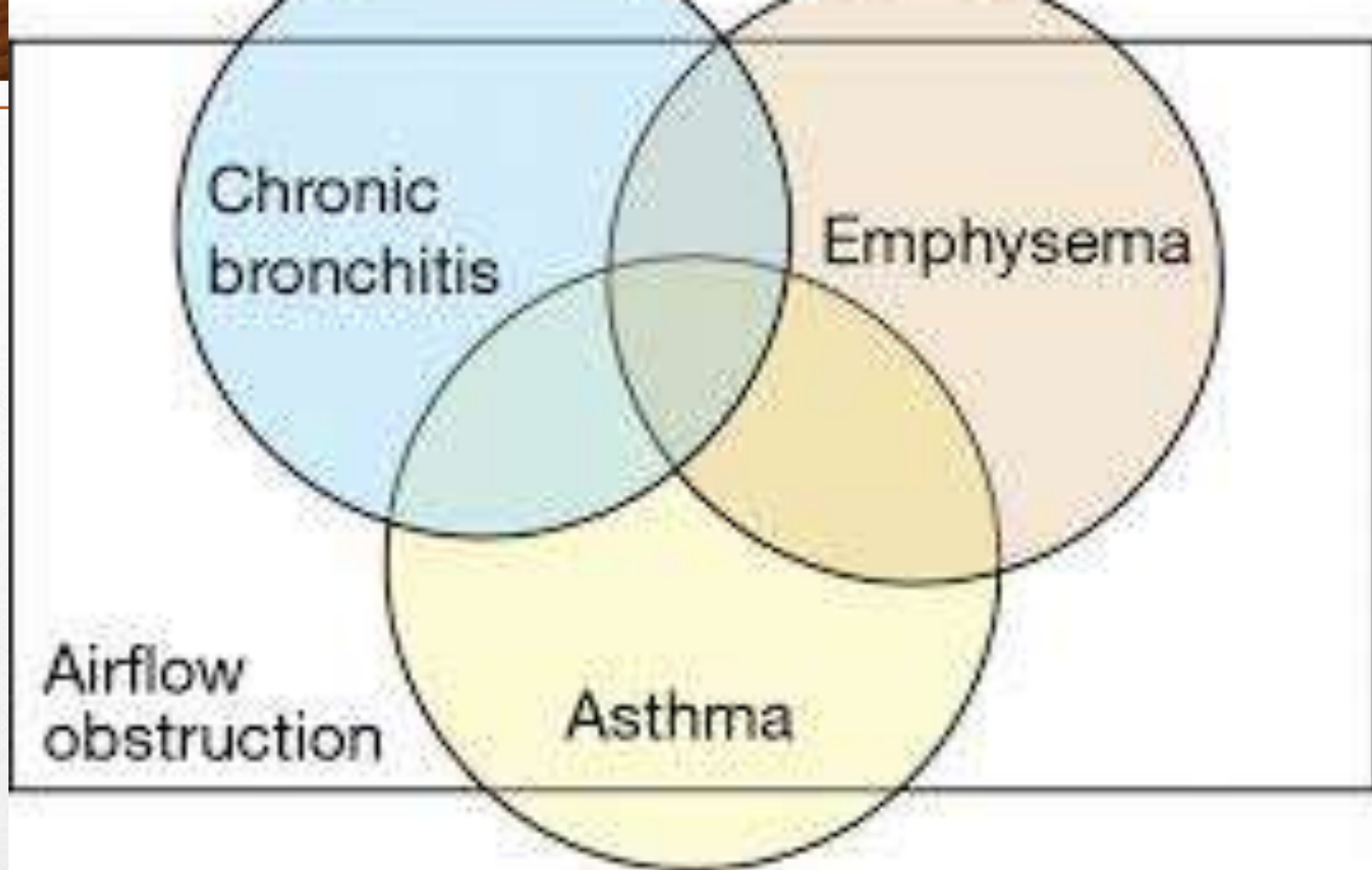
CVRS dept.

DESBJCOP,Pune

# Defination

---

- GOLD's definition of COPD was changed in its 2017 Report: "COPD is a common, preventable, and treatable disease that is characterized by persistent respiratory symptoms and airflow limitations that are due to airway and/or alveolar abnormalities usually caused by significant exposure to noxious particles or gases."



Emphysema: abnormal, permanent enlargement of the air spaces beyond the terminal bronchiole, accompanied by the destruction of the walls of the air spaces without fibrosis.

# ELECTROCARDIOGRAPHY



Dr Shreya Dhake (PT)  
Associate Professor  
DESBJCOP,Pune



# INTRODUCTION

- Electrocardiogram (ECG or EKG) is a graph that records the electrical activity of the heart.
- ECG records these cardiac electrical currents (Voltages, potentials) by means of metal electrodes placed on the surface of the body.



# HEART BLOCKS



# INTRODUCTION TO HEART BLOCKS

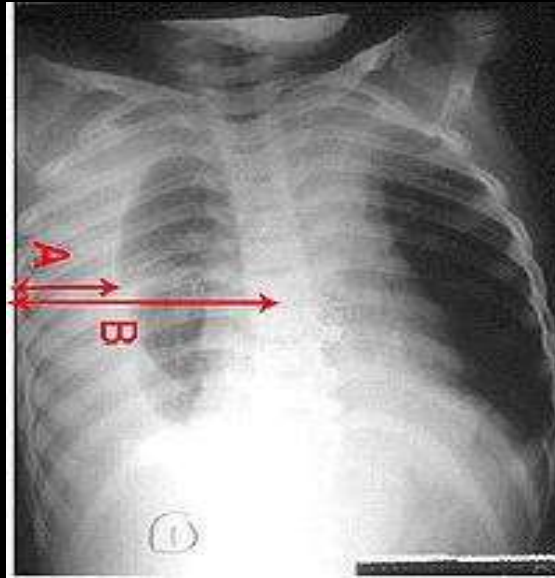
- OCCUR WHEN THERE IS A PARTIAL OR COMPLETE INTERRUPTION IN THE CARDIAC ELECTRICAL CONDUCTION SYSTEM.
- CAN OCCUR ANYWHERE IN THE ATRIA BETWEEN THE SA NODE AND THE AV JUNCTION.
- IN THE VENTRICLES BETWEEN THE AV JUNCTION AND PURKINJE FIBERS.

# Respiratory Disorders: Pleural and Thoracic Injury

- I. Disorders of the Pleura

- ◆ A. Pleural Effusion

- ★ Definition: a collection of excess fluid in the pleural space.

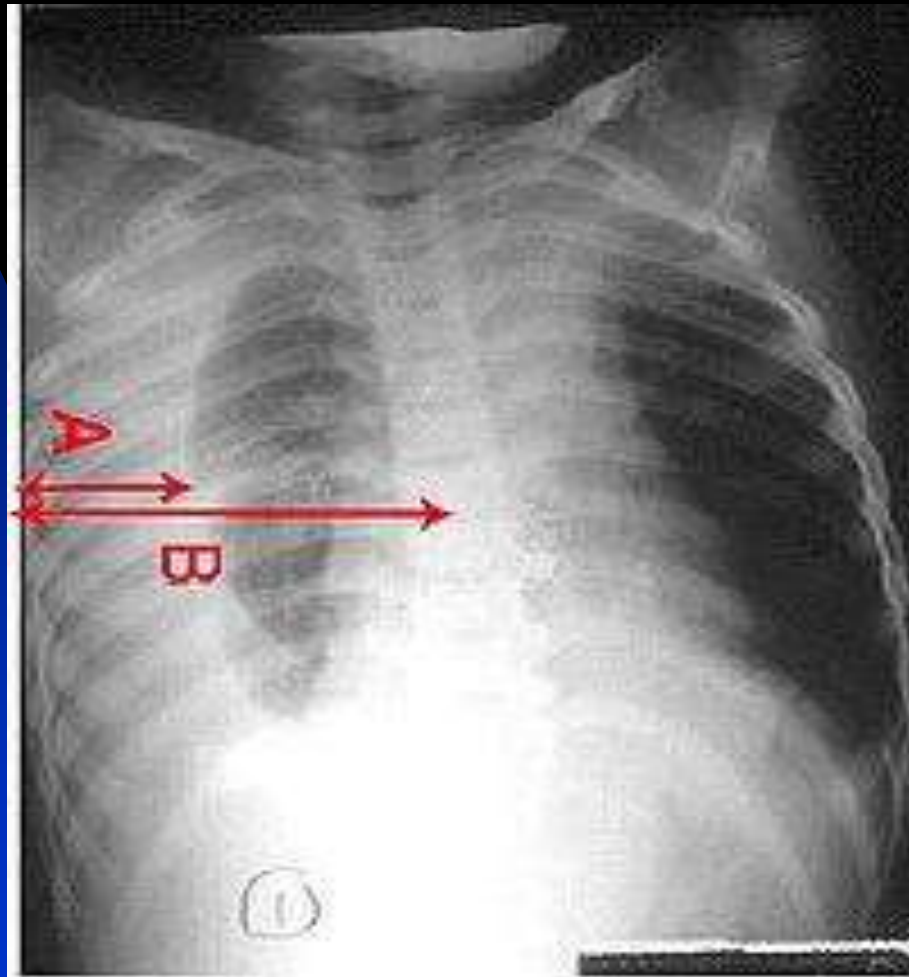


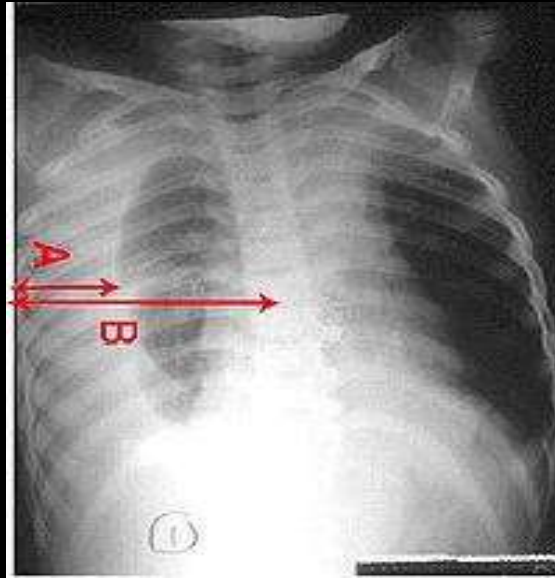
- **Pleural effusion** Chest x-ray of a pleural effusion. The arrow A shows fluid layering in the right pleural cavity. The B arrow shows the normal width of the lung in the cavity

# Pleural Diseases

## Pleural Effusion

- ★ **Definition: a collection of excess fluid in the pleural space.**





- **Pleural effusion** Chest x-ray of a pleural effusion. The arrow A shows fluid layering in the right pleural cavity. The B arrow shows the normal width of the lung in the cavity

# Postural Drainage



# Objectives

- Understand the meaning of postural drainage.
- Understand the techniques used in manual therapy (percussion, vibrations and shaking).
- Identify the indications and contraindications for postural drainage and manual therapies.
- Demonstrate above therapeutic techniques to aid secretion drainage.

# PULMONARY REHABILITATION



# Defination

- PR is an evidence based, multidisplinary & comprehensive intervention for patients with chronic respiratory disease who are symptomatic & often have decreased daily life activities. Integrated in to the individualized treatment of the patient, PR is designed to reduce symptoms, optimize functional status, increase participation & reduce health care costs through stabilizing or reversing systemic manifestations of the disease. ( by ATS/ERS, 2006)



# INTRODUCTION TO MOVEMENTS

Dr Shreya Dhake (PT)

- Movement is a fundamental characteristic of all animal life and the means by which the organism adapts itself to the demands made upon it by the environment in which it lives.

# ACTIVE MOVEMENTS



# Classification of movements

## Active movement

### 1. Voluntary:

- Assisted
- Free
- Assisted-resisted
- Resisted

### 1. Involuntary reflex

## Passive movements

- Relaxed passive movement including accessory movement
- Passive manual mobilisation techniques

---

A good relation does not depend  
how good understanding we have  
But it depends on how better we  
avoid misunderstanding





# AXIS AND PLANES

---

DR SHREYA DHAKE (PT)